



INTER ARMADA 01

SPECIFICATIONS

GENERAL

Name	INTER ARMADA 01
Flag	Indonesia
Port of Registry	Batam
Year	1993
Place of Built	Kanrei Shipbuilding, Japan
IMO NUMBER	9066942
Class Society	NK Coastal
Complement	13 persons

PARTICULARS

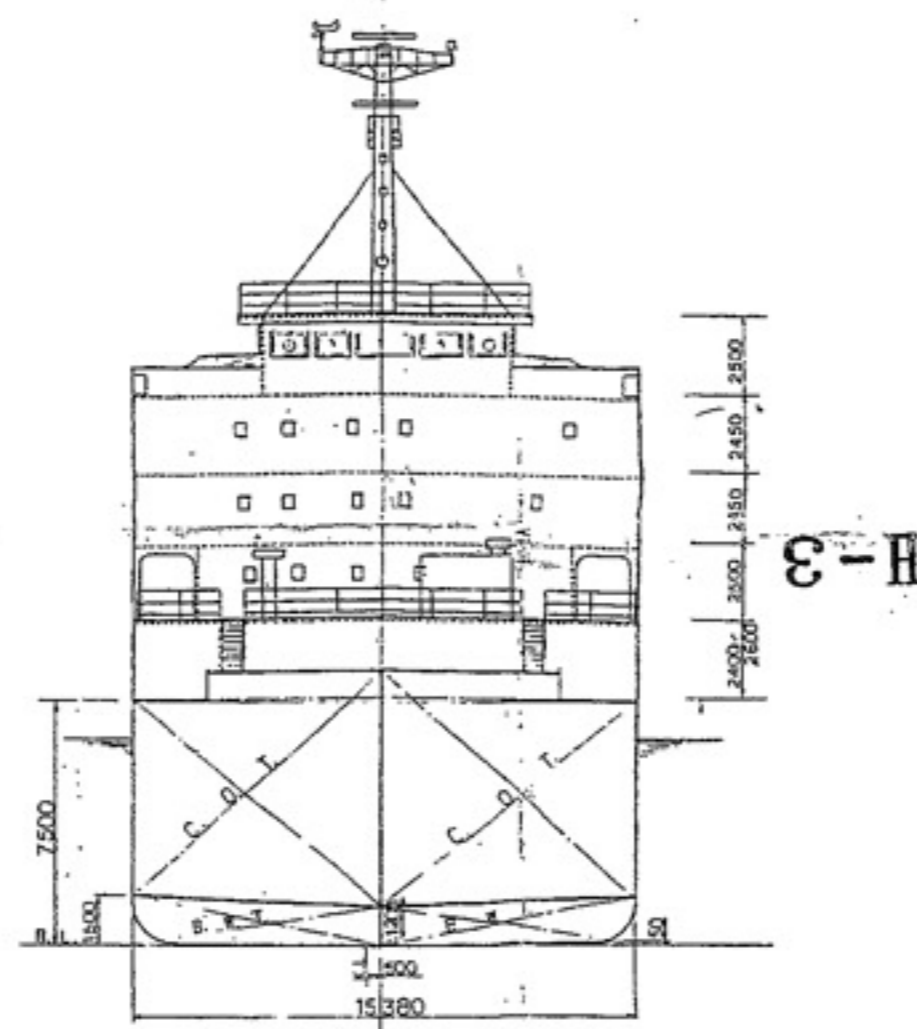
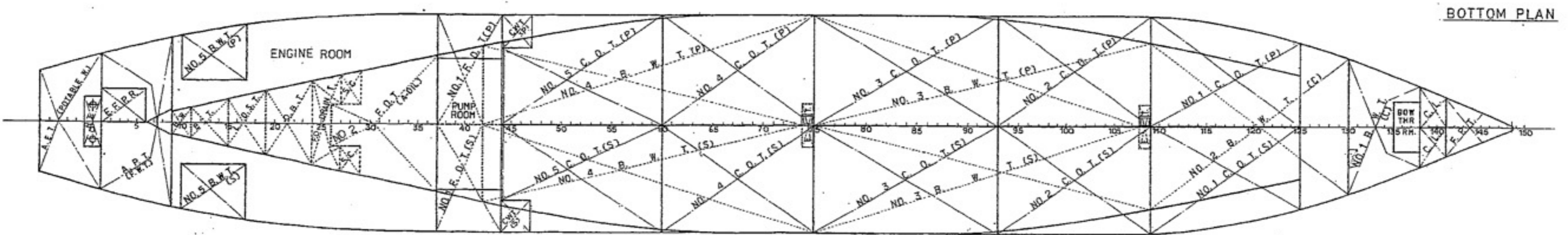
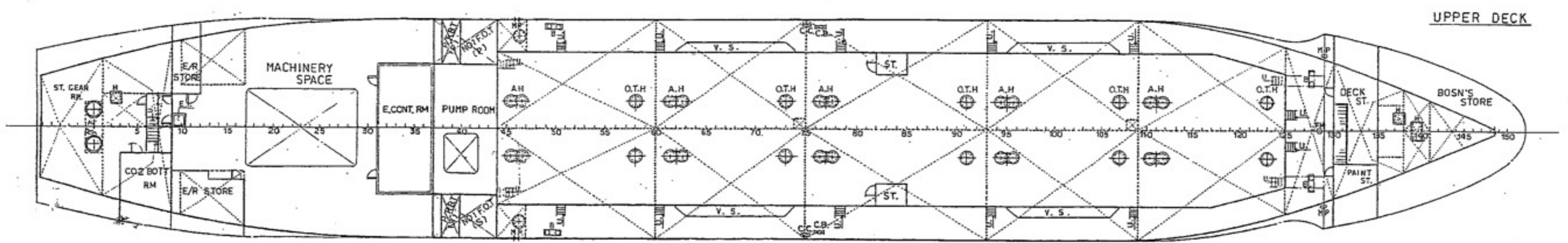
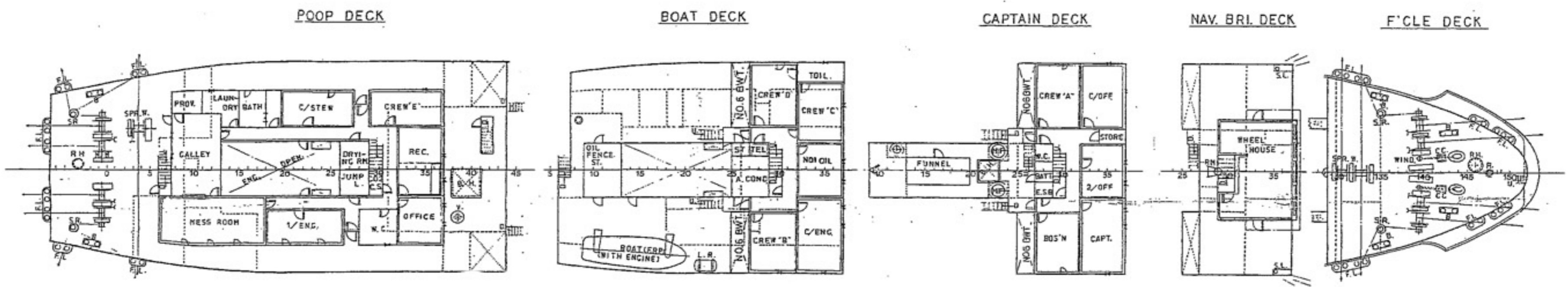
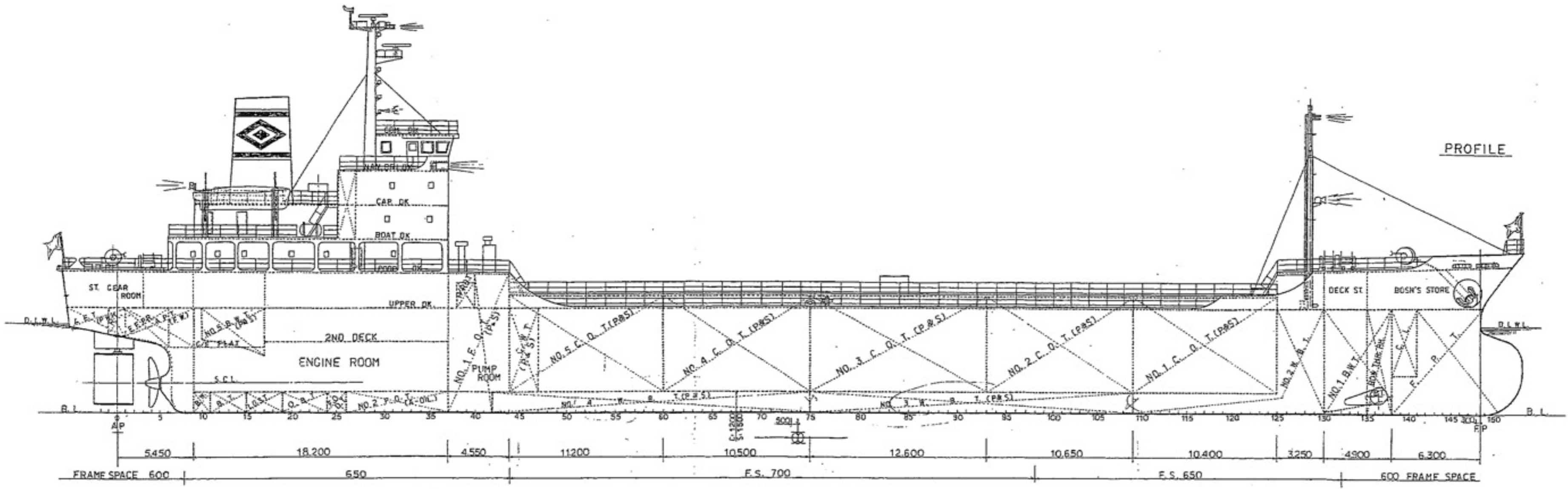
Type of Vessel	Product Tanker
DWT	4,991 Tons
Gross Tonnage	2983 Tons
LOA	105.04 m
Breadth	15.38 m
Depth	7.50 m
Draft	6.37 m

CARGO ARRANGEMENTS

Cargo Tanks	10
Total Capacity in cubic meters	5.400 m ³ at 100%
Main Cargo Pumps	Screw Type 2 x 1.200 m ³ / hr

MACHINERY

Main Engine	Akasaka 6UEC37LA 4,200 pcs/210 rpm
Generators	Two units: Taiyo 350 kVA/445 v Taiyo 50 kVA/445 v (bow thruster) Mitsui Deutz 60kVA/45 (steering)
Aux Engine	Two units: Yanmar S165L-DN 420 ps/1,200 rpm (generator) Yanmar M200AL-UN 720 ps/920rpm (cargo pump and bow thruster) Mitsui Deutz F6L912 82ps/1,80 rpm (steering)
Bowthruster	Kamome TCA-60MN
Propeller	Kamome FPP
Speed Ballast	Abt 13 knots
Speed Laden	Abt 12 knots



Jl. Tanjung Riau
Kawasan Industri
Sekupang, Batam 29432
Indonesia
+62 (0) 778 327691

management@miniships.com